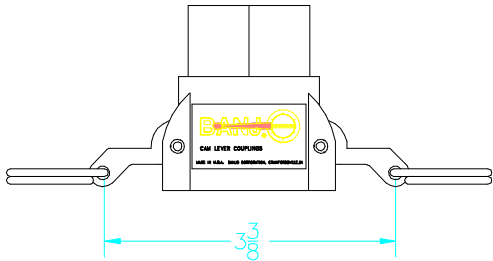
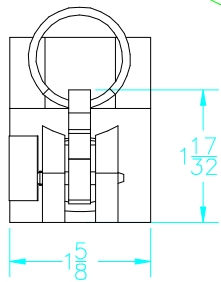
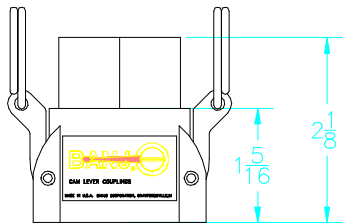
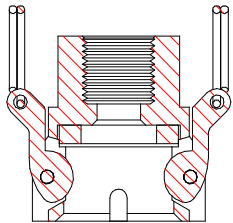
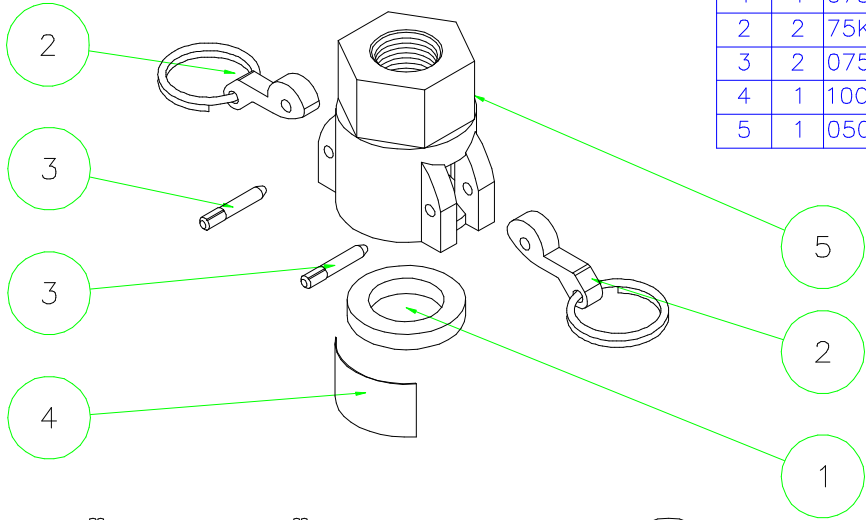



Parts List			
Item	Qty	PART NO.	DESCRIPTION
1	1	075G	3/4" GASKET
2	2	75K	CAM ARM ASSEMBLY
3	2	075P	3/4" PIN
4	1	100DECAL	BANJO DECAL
5	1	050MXD	3/4" COUPLER, FNPT



THIS DRAWING AND ALL INFORMATION
CONTAINED THEREON ARE THE EXCLUSIVE
PROPERTY OF BANJO CORPORATION.
UNLESS SPECIFICALLY NOTED, THIS
DRAWING AND ITEMS SHOWN ON THIS
DRAWING ARE SUBJECT TO CHANGE
AT ANY TIME.



LIQUID HANDLING PRODUCTS®

BANJO CORPORATION
150 BANJO DR. * CRAWFORDSVILLE, IN 47933

PART NO.	050D
TITLE	3/4" COUPLER X 3/4" FEMALE THD